

# PANTANAL 2024

## FAQ



### Important contacts

Petr Bambousek, tour leader

*Feel free to write to me whenever you need more information about the travel itinerary, clothing, equipment, etc.*

[sulasula@email.cz](mailto:sulasula@email.cz) | [www.sulasula.com](http://www.sulasula.com)

Miloslav Martan, OCEAN travel agency owner

*Please write to me whenever you need more detailed information regarding contracts and payments*

[martan@ca-ocean.cz](mailto:martan@ca-ocean.cz) | [www.ca-ocean.cz](http://www.ca-ocean.cz)

1

#### TOUR BASICS

Group size, start, finish, transportation, clothing, currency

2

#### LODGING

Hotels, food, drinks

3

#### PHOTO EQUIPMENT

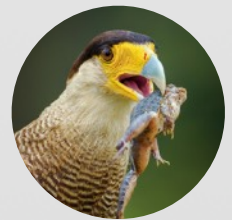
Cameras, lenses, tripod, flashes

### QUICK FACTS



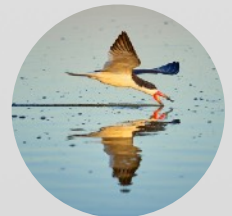
#### Tour Date

June 24 - July 7th  
2024



#### Group size

Maximum 6 persons



**Tour starting/  
finishing point**  
Cuiabá (BR) airport  
or Airport hotel

## 1. TOUR BASICS

---

### **When and where does the tour start?**

Our tour starts in the city of Cuiabá on June 24th. We can pick you up either at the airport or at a nearby hotel. Departure to the Pantanal will be around 10:00 AM. We recommend arriving in Cuiabá a day earlier, staying at a hotel near the airport (e.g., Slim Hotel), enjoying the hotel breakfast, and waiting in the lobby at 10:00 AM for pickup.

### **When and where does the tour end?**

Our tour ends again in the city of Cuiabá on July 7th. We can take you to the airport or a nearby hotel. The expected arrival time is 3:00 PM. For a smooth transition, we recommend spending the night at a hotel near the airport after arrival and planning your departure for the following day.

### **What is the maximum number of participants?**

For increased comfort and a private atmosphere, the maximum number of participants is 6.

### **What is the minimum number of participants?**

To realize the tour, confirmation of participation and payment from 5 participants are needed.

### **What is the minimum age of participants?**

Participants should be adults, independent, and in good health to handle traveling in a tropical environment.

### Recommended Hotels in Cuiabá

---

Amazon Plaza  
Intercity Premium  
Deville Prime  
Slaviero Slim (near the airport)  
Taina Hotel (near the airport)

### **What is the maximum age of participants?**

There is no maximum age limit, but participants should be able to take care of themselves and withstand tropical conditions.

### **How physically demanding is the trip?**

The trip itself is not physically demanding. The Pantanal landscape is mostly flat, without hills. Transfers will be made in an air-conditioned van. We will often go out on motorboats to see animals. Most of the animals and birds are near the lodges. If we take a walk (territory of Great Potoo, Helmeted Manakin, Ocelot photography hide, etc.), it's usually a distance of up to 0,5-1 km one way. From this perspective, the Pantanal is one of the least demanding habitats for photographing wildlife. During the day, temperatures can reach over 30 degrees Celsius, so it's good to consider potential strain on the body and reduce activity at noon. For this reason, planned activities are in the morning or afternoon hours, when the light is most favorable for photography. The Pantanal is a remote area - bring all regular medications and a basic first aid kit for minor injuries, insect bites, etc.

## 1. TOUR BASICS

---

### **Is any vaccination required?**

For travel to Brazil, basic travel vaccinations such as Hepatitis A+B and Typhus are generally recommended. However, consult current health conditions in the area with a travel medicine specialist and choose appropriate additional vaccinations. Participants are fully responsible for their health issues.

### **Are there mosquitoes in the Pantanal?**

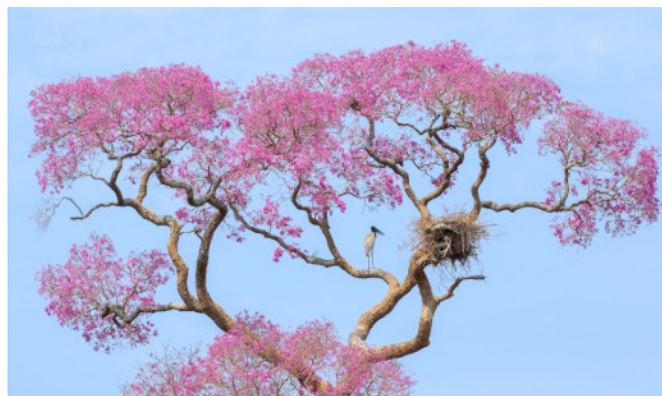
The Pantanal is a huge wetland, ideal for mosquitoes. From personal experience, mosquitoes are most active at dawn and dusk. During the day, high temperatures usually reduce their activity. We recommend quality repellent, long pants, and long sleeves for protection. Mosquitoes typically don't bother during boat trips. Instead, horse flies may occasionally land.

### **Is there malaria in the Pantanal?**

There is no malaria in the Pantanal. However, it's recommended to protect against mosquitoes, especially at dawn and dusk. Always consult current health risks with your doctor. Participants are fully responsible for their health risks.

### **What is the weather like in the area?**

During our visit to the Pantanal, the weather is mostly sunny without precipitation. Daytime temperatures are over 30 degrees Celsius, morning temperatures are a pleasant 15-20 degrees C. However, exceptions exist, like lodgings near rivers where morning temperatures can drop to 5 degrees C. Especially during morning boat



trips, the perceived temperature can be quite low. Therefore, we recommend wearing multiple layers on jaguar tours, which can be gradually removed.

### **What is the best clothing?**

Comfortable, breathable clothing is best. Temperatures will be high most of the day. We recommend muted color long pants and long-sleeve shirts or breathable shirts. Shorts and a t-shirt are sufficient for relaxing around the lodgings. Specific to boat trips, protect against the sun with factor 50+ sunscreen, long sleeves, long pants, a hat or cap covering the neck, and possibly a neck scarf pulled over the nose. It's not aesthetically pleasing but worthwhile for full protection. Light trekking shoes are sufficient for walking tours.

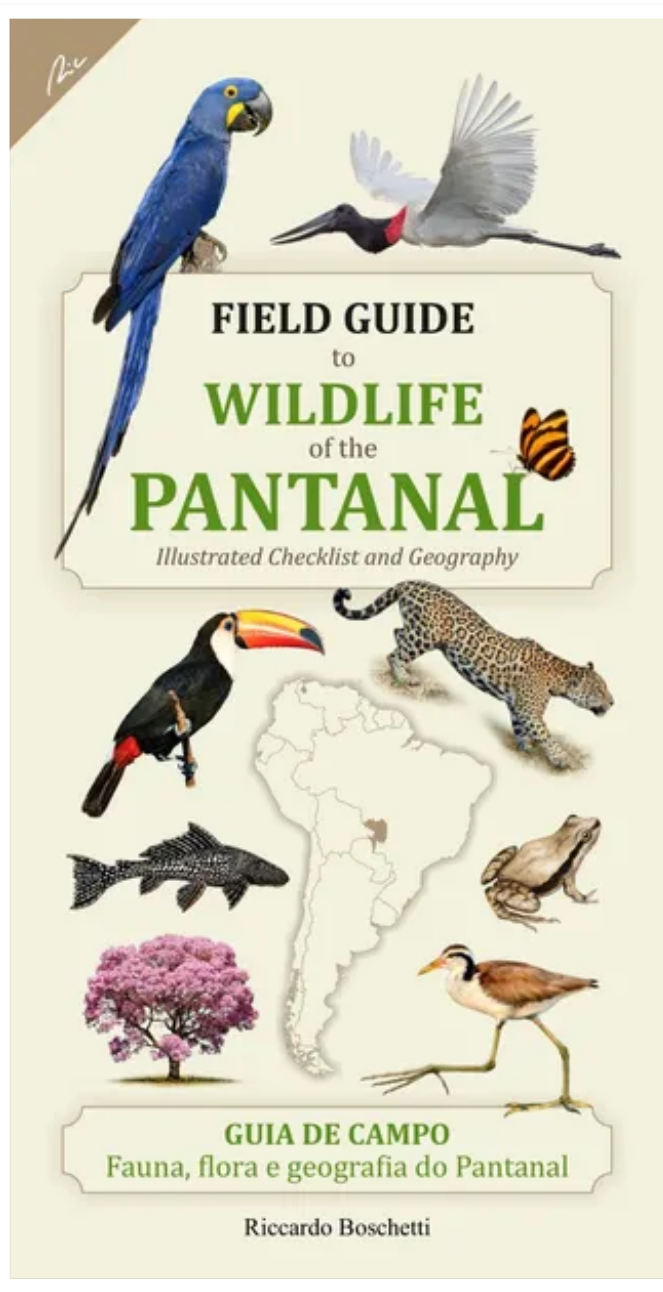
## 1. TOUR BASICS

### **Do I need to have cash? What is the currency?**

The tour price includes everything necessary for the stay, so there are few situations where participants need to buy extra. Most often, these are drinks paid by each participant before leaving the lodging. All lodgings accept Visa/ MasterCard or cash in USD. Generally, there is no need to bring local currency. If participants need Brazilian reals, they can be purchased at the airport terminal upon arrival.

### **What is included in the price?**

The price includes everything essential for a smooth and comfortable trip. From June 24th, you'll be in an air-conditioned van for transport to the Pantanal and transfers between lodgings. You'll have meals 3 times a day in the form of breakfast, lunch, and dinner starting with the first lunch at Piuval Lodge and ending with the last lunch at Pouso Alegre Lodge before returning to Cuiabá. The price includes 13 nights in double rooms at quality Lodges. It also covers all boat trips for tracking jaguars, giant otters, kingfishers, and other Pantanal river jewels, as well as two visits to ocelot observation hides. Also included are the constant presence of a local experienced guide and a professional photographer with extensive experience in the area. You'll have access to drinking water at all lodgings (bring your own refillable water bottle). Each participant will receive a Pantanal Wildlife Field Guide for quick identification of observed species.



## 2. LODGING

### **How are the lodgings?**

We have chosen best lodges based on previous experience. They are local fazendas and pousadas of higher or middle class. Rooms and surroundings are spacious and clean. Most rooms have air conditioning or a fan. Some have a small pool to compensate for the high day temperatures.

### **Is there internet on site?**

Wi-Fi is available in the lodgings, usually in common areas or near the dining area. The connection speed can be variable. It's usually sufficient for communication with home (emails, social networks, websites), but don't rely on it for downloading large data volumes.

### **Is there electricity in the lodgings?**

Yes, all lodgings have electrical outlets in the rooms. The Pantanal is remote, so power outages can occur occasionally.

### **Do the rooms have AirCon?**

Yes, rooms typically have AirCon. If not available, there's at least a fan. Often both are present.

### **Is it possible to book a single room?**

#### **What is the surcharge?**

Yes, a single room can be booked, but availability might be limited due to capacity. The surcharge is 1380 USD/ person.

### **What is the crime rate in the area?**

From our personal experience, the Pantanal is safe area. Lodgings are somewhat closed



communities with minimal movement of non-guests. We have not encountered theft or personal assault cases on our trips. However, it's each participant's responsibility to be cautious and follow guides' and lodging staff's instructions. Participants are fully responsible for any losses, property damage, or health issues.

### **Do hotels accept cards for extra payments?**

Yes, all lodgings support payment by Visa/ MasterCard.



### 3. PHOTO EQUIPMENT

---

#### **Do I need any special equipment?**

Most photos will be taken "in the wild" without special techniques. Basic equipment includes 1 main camera, a wide-angle lens, a medium zoom lens (70-200mm), and a telephoto lens (150-600mm). We also recommend a backup body in case of main camera failure or for quicker response on boats where the distance to the subject changes dynamically.

#### **Do I need a tripod?**

We recommend bringing a tripod. Although not frequently used, it will be appreciated for night sky photography, which is breathtaking in the Pantanal due to minimal light pollution.

#### **Do I need a flash?**

A flash is not necessary, but if it fits in your backpack, you can use it. If interested, we are happy to share our long-term experience with using flash for animal photography.

#### **Do I need professional equipment?**

Professional equipment does not guarantee professional results. It's important that you know how to use your equipment. Throughout the trip, you'll have access to a professional photographer who can help with optimal settings if you need advice.



#### **Do I need to be good at photography?**

Being good at photography is not a requirement for participation, but we recommend that participants at least know the basics of operating their camera. This ensures that you won't miss out on most subjects we'll have the opportunity to photograph while searching through the menu. We are happy to advise on optimal camera settings during the trip.

#### **Will someone help me with photography?**

Throughout the trip, you'll have access to a professional photographer who can help with optimal settings if you need advice.

#### **What animals will we encounter?**

The Pantanal offers an unprecedented range of wading birds, toucans, parrots, and mammals with daytime activity. During a 2-week stay, it's possible to photograph over 100 species of animals. Despite this diversity, observing specific species cannot be guaranteed, as all animals move through the area at will.

### 3. PHOTO EQUIPMENT

---

#### **Is it certain that we will see a jaguar?**

Like other animals, jaguars move through the area spontaneously, and their observation cannot be guaranteed. However, the region we visit is among the best places in the world to observe jaguars. Thanks to the network of boatmen, it's possible to spot individuals discovered by other groups. On the boat, it's common to search fruitlessly for hours and then suddenly have several opportunities to photograph jaguars at once. We will be in the hands of the best jaguar trackers in the area, so we believe the chances of photographing them are high.

#### **Why travel with us?**

Petr is an experienced photographer and an international ambassador for OM System (Olympus). He visits the Pantanal regularly every year and has extensive experience in finding attractive photography subjects. His photographs are regularly awarded in the world's most prestigious photo competitions. A knowledgeable local guide, who knows every corner of the Pantanal, will be with us throughout the trip. Together with Petr, they created an itinerary that represents "the best of northern Pantanal."

#### **Do I need to have OM System (Olympus) equipment on the trip?**

Participation in the expedition is not conditional upon owning a specific brand of camera. If you are interested in trying out the OM System equipment, you will certainly have the ideal opportunity.

